



The Ashbeach News

Learning for life – to be the best we can possibly be.

Website: www.ashbeachprimary.co.uk

Email: office@ashbeach.cambs.sch.uk



Issue No.245

September 2024

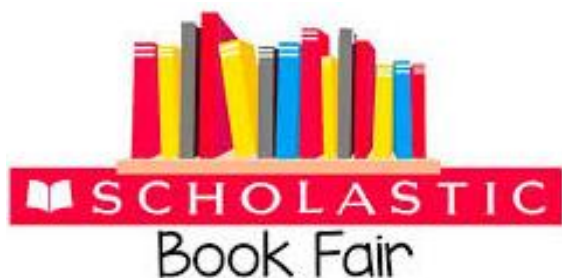
Dear Parents and Carers,

As we settle into the new academic year, I am pleased to report that our pupils have adjusted well to their new classes and routines. The atmosphere in school is calm and conducive to learning, which is a testament to the hard work of our staff and the positive attitudes of our pupils.



One of our key focuses this term has been on handwriting. I am delighted to share that we are already observing improvements in some classes. This early progress is encouraging, and we will continue to emphasise the importance of clear, legible handwriting across all year groups.

Our recent book fair was a resounding success. Not only did it provide an excellent opportunity for our pupils to explore new literature, but it also raised valuable funds for the school. These funds will be used to purchase additional books, further enriching our library resources and supporting our pupils' reading journeys.



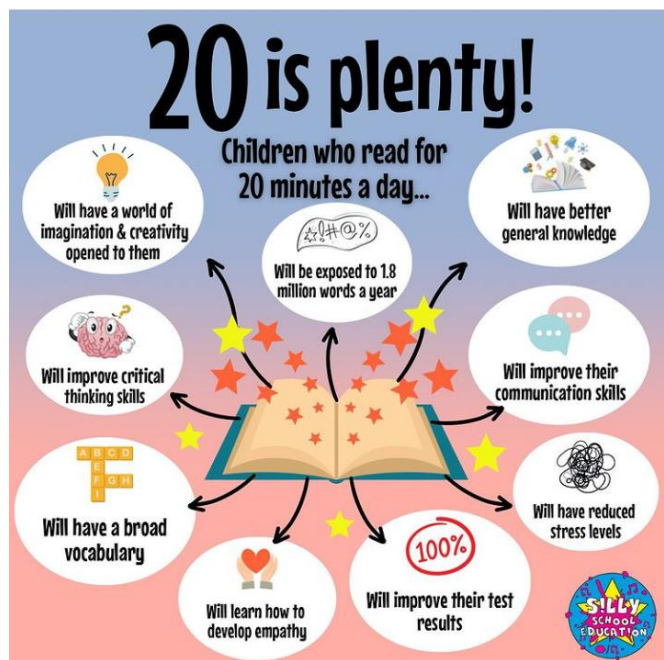
Speaking of reading, I would like to extend my congratulations to all the children who completed the summer reading challenge. We celebrated their achievements in last week's assembly, recognising their commitment to reading during the holidays. If your child has accomplished something noteworthy outside of school, please encourage them to share it during our Friday celebration assemblies. We are always eager to acknowledge and celebrate our pupils' diverse talents and achievements.



I would like to draw your attention to two important matters. Firstly, regarding parking, I must emphasise that for the safety of our children and staff, the school car park is reserved for staff use only. The only exceptions are for taxis and blue badge holders who are permitted to use the car park for drop-offs. We kindly ask all other parents and carers to park on the roadside and use the safe walking path to access the school. Your cooperation in this matter is greatly appreciated.



Secondly, I encourage you to read the attached leaflet outlining the benefits of reading for 20 minutes a day. Additionally, we strongly recommend continuing the practice of bedtime stories for as long as your children are receptive. Listening to stories read aloud offers numerous advantages, including improved vocabulary, enhanced empathy, a better understanding of the world, and even improved mental health. This precious time also helps settle children for a good night's sleep, preparing them for the next day's learning.



Lastly, please carefully review the dates provided for upcoming events such as parents' evening, harvest celebrations, and the eagerly anticipated school discos. These events are important opportunities for community engagement and celebration, and we look forward to your participation.



Harvest Donations

We are collecting any non-perishable items to take to church for the Harvest. Suitable foods include cereals, packets, tins, jars, pasta and rice.

Thank you for your support!

Parent Consultations

Tuesday 15th & Thursday 17th October between 3.30 – 6.30pm. Consultation booking requests will open from 1st October.



Please can we remind all families to be extra cautious when sending snacks and packed lunches into school.

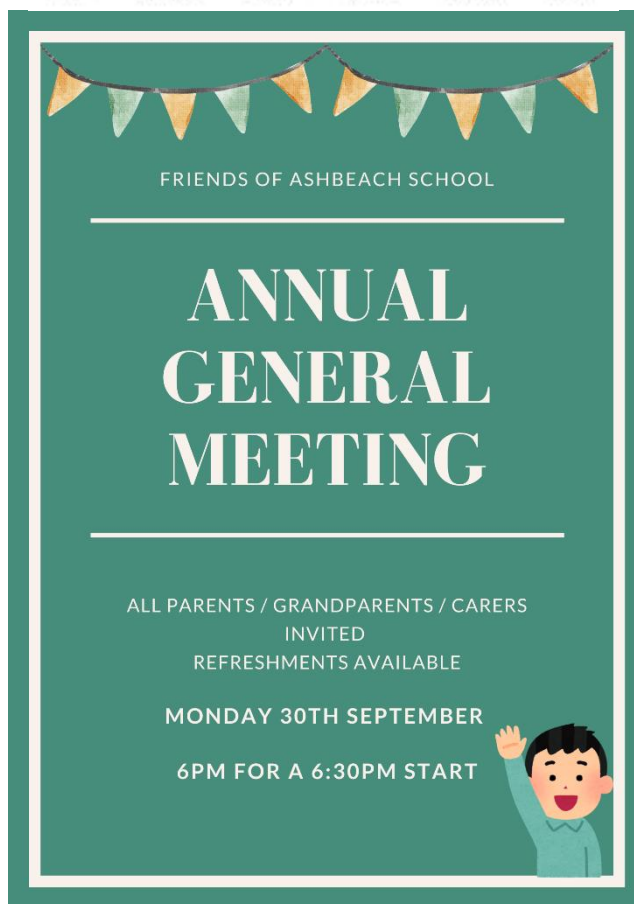


We have children in school who have SERIOUS allergies to nuts. Please ensure you do not send any food items that contain nut ingredients. This include hazelnut spread like Nutella which could trigger an allergic reaction.

This is a rule for the whole school. We now have several children from different classes in school who are highly allergic to nuts.

I appreciate your support in helping keep the children safe.

Food Allergens



Thank you for your continued support of our school community.

School holiday and term dates

2024/2025 academic year		
	Starts	Ends
Autumn term begins	Thursday 5 th September 2024	Friday 25 th October 2024
Autumn half term	Monday 28 th October 2024	Friday 1 st November 2024
Autumn term continues	Monday 4 th November 2024	Friday 20 th December 2024
Christmas holiday	Monday 23 rd December 2024	Friday 3 rd January 2025
Spring term begins	Tuesday 7 th January 2025	Friday 14 th February 2025
Spring half term	Monday 17 th February 2025	Friday 21 st February 2025
Spring term continues	Monday 25 th February 2025	Friday 4 th April 2025
Easter holiday	Monday 7 th April 2025	Friday 18 th April 2025
Summer term begins	Tuesday 22 nd April 2025	Friday 23 rd May 2025
Summer half term	Monday 26 th May 2025	Friday 30 th May 2025
Summer term continues	Tuesday 3 rd June 2025	Wednesday 23 rd July 2025
Summer holiday	Thursday 24 th July 2025	2025/26 dates to be confirmed

Professional Days

Tuesday 3rd September 2024

Wednesday 4th September 2024

Monday 6th January 2025

Monday 24th February 2025

Monday 2nd June 2025

Bank Holidays

Monday 21st April 2025

Monday 5th May 2025

ASHBEACH SCHOOL VALUES

HONESTY

- We have integrity
- We are truthful
- We are true to ourselves
- We ask for help when we need it



EVOLVE

- We value change
- We grow and learn
- We mature
- We improve



ASPIRE

- We challenge ourselves
- We aim to be the best we can possibly be
- We want to learn
- We push ourselves to improve



RESILIENCE

- We have a growth mindset
- We learn from our 'mistakes'
- We keep trying
- We use our tools to help us 'get out of the pit'



TEAM

- We work together
- We celebrate that we are all different
- We are one family
- We support each other and are kind to one another



 Cambridgeshire
County Council

Your Education Inclusion Family Advisor



Danielle Tetherton

Education Inclusion Family Advisors offer you an opportunity to ask for information, advice and support on any issue affecting your family life in a relaxed and confidential environment. These areas include:

- Challenging behaviour
- Routines
- Supporting emotions and wellbeing
- School transitions
- Parenting strategies
- Building resilience and confidence
- Any other family challenges you might be facing

As Education Inclusion Family Advisors, we offer support in various ways:

- 1:1 sessions
- Workshops on specific topics
- Attending school events
- Signposting to other services

Please note: Currently our service is continuing to support families virtually, however, we can also offer face-to-face support when needed.

To access our service consent form, for support please use link below or scan the QR code

<https://forms.office.com/e/8j1EDrtHgi>



For more information speak to your school office or contact us directly on:
 danielle.tetherton@cambridgeshire.gov.uk

Diary Dates

2024

16 Sep Afterschool clubs start
30 Sep Friends Of Ashbeach AGM, 6.30/7pm start
25 - 03 Oct Book fair
04 Oct EYFS Phonics Morning 9.15am
07 Oct Tempest Individual Photos 9am
07 Oct Year 6 only Parents Meeting
10 Oct World Mental Health Day – wear something that makes you feel happy!
14 Oct KAPLA Bricks Day
15 Oct Dolphin & Koala Library Bus visit
15 Oct Parent’s Evening
17 Oct Parent’s Evening
20 Oct Harvest Festival Choir 10.45am
21 Oct Harvest Assembly - 2.30pm, parents welcome to join us
28 Oct -01 Nov Half Term Break
04 Nov School term starts
07 Nov Swimming starts for yr5 & 6
11 Nov Anti-Bullying week
11 Nov Armistice Day
12 Nov ODD SOCKS day
15 Nov Children in Need Day
19 Nov Dolphin & Koala Library Bus visit
21 Nov Coffee & chat opportunity with our local family support worker, 2.30pm
25 Nov Flu Vaccinations yrR – 6, 12.30 – 3pm
12 Dec KS1 Christmas Production, afternoon 1.45pm
13 Dec KS1 Christmas Production, morning 9.30am
16 Dec Christingle Service, 1.30pm at Ramsey St Marys Church, all welcome to walk and join us
17 Dec Dolphin & Koala Library Bus visit
18 Dec Christmas Jumpers & Christmas dinner day
20 Dec End of Term – non-uniform, class parties

2025

06 Jan Teacher Training Day
07 Jan Start of Spring Term
21 Jan Young Voices Concert at the O2
21 Jan Dolphin & Koala Library Bus visit
17 – 21 Feb Half term holiday
18 Feb Library Bus visit
24 Feb Teacher Training Day
25 Feb Back to school
06 Mar World Book Day
07 – 16 Mar British Science Week

18 Mar Dolphin & Koala Library Bus visit
07 – 21 Apr Easter Holidays
15 Apr Library Bus visit
22 Apr Start of Summer Term
24 Apr Tempest – class photos
05 May Bank holiday – school closed
12 – 15 May Year 6 SAT’s week
20 May Dolphin & Koala Library Bus visit
26 – 31 May Half term holiday
02 Jun Teacher Training Day
03 Jun Back to school
17 Jun Dolphin & Koala Library Bus visit
30 – 01 Jul YR5/6 Grafham Waters Residential
02 Jul Yr R Vision Screening session
15 Jul Dolphin & Koala Library Bus visit
23 Jul Last Day of Term
24 Jul Summer Holidays start



Please come along for a coffee and chat afternoon with Ms Hawke and Danielle Tetherton – our local Family Support worker on Thursday 21st November 2.30pm in the Barn.

