



# The Ashbeach News

Learning for life – to be the best we can possibly be.

Website: [www.ashbeachprimary.co.uk](http://www.ashbeachprimary.co.uk)  
Email: [office@ashbeach.cambs.sch.uk](mailto:office@ashbeach.cambs.sch.uk)



Issue No.248

January 2025

Dear Parents and Carers,

We have had a positive start to the new year. The children have come back to school well and I have seen some impressive work in their books.



As a school we have continued to work on handwriting across the school and the children are making good progress with this. In Friday's assemblies we award badges to a child in each class who has worked hard to improve an element of their handwriting. The children have been proudly wearing these badges in

school. You can learn more about how we teach handwriting on our website under the English tab. Here you will find a short description and a progression and procedure document at the bottom of the page.



Penguins and Owls start their day with phonics. They learn a new sound every day! This is one reason that it is crucial that they are in school on time so they don't miss this vital lesson. We follow a programme called Little Wandle. You will also find more information on this programme on our website. If you are interested in seeing phonics in action, Mrs Smith will be opening her classroom doors on **Friday 14<sup>th</sup> Feb**, so that parents of Penguin children can stay to watch a phonics lesson.



The children in Penguin class have been learning about 'People who help us' and have been lucky enough to have a visit from the police who gave a talk and demonstrate the unique elements of a police car. Pictures of the day are displayed on our photo calendar in the entrance hall.



Mrs Goater and Mrs Jenner kindly took our Young Voices Choir to a concert in the O2 this



month. Kind thanks to the parent helper and to all the parents and carers who stayed up late to collect the children. They had a fantastic time making lifelong memories.





Children across school learned about Chinese new year this week. It is the year of the Snake and the children took part in different activities in each class. KS2 found out

about where China is in the world with year 6s focussing more on the Geography aspect of China. The other classes completed a craft activity and find out some facts about Chinese New Year. KS1 learnt a special dance which was performed in assembly on Wednesday.

**A thank you**

Since opening the gates at 8.35am, we have noticed an increase of children who are in and settled in time for learning to start at 8.45am. This makes such a difference so thank you.



**A Request**

We are planning to add to the enjoyment of playtime for the children by introducing some equipment and resources. Friends of Ashbeach are kindly helping purchase some items. We are also looking for donations of items that could enhance their creative play:



- Old pots or saucepans; large spoons; plastic plates etc for use in a mud kitchen.
- Plastic crates that can be stacked of used to make paths etc. (like an old style milk crate or a Tesco delivery crate)
- Guttering
- Sturdy pushchairs or wheelchairs
- Good condition decking planks
- Buckets and spades (we hope to get a covered sand pit at some point)
- Unwanted giant Jenga or giant connect 4
- Very large cardboard boxes

We hope to be able to buy items such as a covered sandpit; means to play music outside; hula hoops; an outdoor kitchen and possibly a play house.

All items and activities will be risk assessed and the children will be taught how to use them safely.

The aim of this project is to enhance creative play, collaboration and enjoyment of playtimes. Lots of learning takes place through play and 20% of their time is spent as free play. Projects like this have also improved attendance at other schools.



All children who have wellies in school will be allowed on the field at lunch. All classrooms have a welly rack outside so they can be stored.

**Parents Evening**



You will be able to book parents evening appointments on the Arbor app from MONDAY 10<sup>th</sup> FEBRUARY, 9am. During parents evening, we aim to put out some uniform donated from Tesco (lots of summer skirts and shorts) and some preloved uniform. Please do have a look as this is not only economical for you but it is also environmentally friendly! All will be free of charge.

**20 is Plenty**

One of the most important things you can do to help your child make progress in school is to listen to them read. Sharing stories is also hugely beneficial. 20 minutes a day would ensure your child has the best opportunity to become a fluent reader. Please read the 20 is plenty poster to learn about the many benefits of reading. In a world of screens, it is more important than ever.



Thank you for those parents who responded to the survey of what you would like to see more of in school. One comment asked for information on the topics that the children are learning about in school.

**This term:**

	EFYS	KS1	KS2
Spring A	People who help us	Great Fire of London Materials DT Building Tudor houses Safety contexts Personal safety Managing Risks Dance	North America study China Study Christianity Drawing in art Safety contexts Personal safety Managing risks Dance Light Living things & habitats
Spring B	Growing  Amazing animals	Great Britain – London materials Transient art in the style of Andy Goldsworthy Safety contexts Personal safety Personal safety Managing risks Dance	Britain's settlements by Anglo Saxons and Scots Christianity DT design a product Gym Plants Properties of materials Evolution and in heritage

**Parenting support**

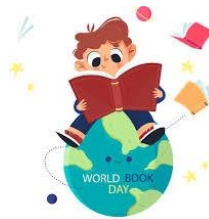
Date for next coffee session is Tuesday 25<sup>th</sup> March at 2.15pm.



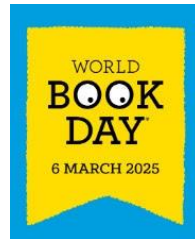
If you are worried about your child's mental health or emotional wellbeing, parents and carers of young people under 13 can make a direct referral to Younited, the details as well as a host of digital resources can be found here: [Younited | CPFT NHS Trust](#)



**What's coming up**



On March 6<sup>th</sup>, it is World Book Day. As usual we will be dressing up. This year we would like to dress up as a book character of their choice. There will be additional information coming out with details of the day and ideas for home-made costumes.



**National Storytelling Week 2025**  
**Saturday 1st to Saturday 8th February**

Enjoy children's picture books in our temporary cosy museum reading corner  
 Colour your own bookmark for all ages  
 Search the museum for children's book characters and unscramble the mystery word to earn a sticker

All for free during museum opening hours of 10am to 4pm Monday to Saturday



[norrismuseum.org.uk](http://norrismuseum.org.uk)  
 01480 497314  
 41 The Broadway, St Ives PE27 5BK

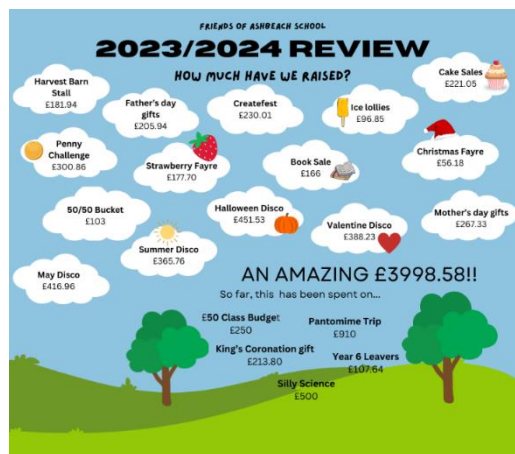
**Love Your Pets**

Children's Craft Session  
 Thursday 20th February  
 10.30am-12pm at Ramsey Library

Join us for some pet themed crafts!  
 Suitable for ages 2-12, younger siblings welcome.  
 £1 per child  
 Booking available at front desk.  
 Children must be accompanied by an adult.

## Friends Of Ashbeach

If you are a parent who has a couple of hours free here and there and would like to join the parent team to support your children, please contact the office to find out more! They always could use an extra pair of hands to help plan, during or after fundraising events.



## Uniform donations

If you have any school uniform clothing that no longer fits and it still has plenty of wear in it, and you no longer have any use for it, please donate it to school and we will put it to good use.

## Cake Donations

Friends Of Ashbeach are asking for any cake or biscuit donations to sell at the cake sale on Friday 14<sup>th</sup> February. Please bring any contributions to the office on Thursday or Friday morning. Please make staff know if any of the items are specifically dairy or gluten free. **ALL** donations must be nut free please.

## Ashbeach Common Grounds Day

Parents, families, neighbours invited to join us for another wonderful day prepping the common for the children's lessons and adventures. We need help building verandas, clearing and restoring the pond, planting, cutting back hedges and brambles, making wood stores and many more mini tasks. If you are able to spare an hour or two, have tools that can be used to help and love making spaces ready for play, then please let Mrs Jenner know!

These are the dates to help:

**Saturday 22<sup>nd</sup> March 9am - 3pm**

**Saturday 28<sup>th</sup> June 9am - 3pm**

**Saturday 27<sup>th</sup> September 9am - 3pm**



Friends of Ashbeach  
**CAKE SALE!**  
Friday 14<sup>th</sup> February  
All cakes 50p  
On sale at break time and after school  
Any donations would be much appreciated!  
All proceeds go directly to Ashbeach Primary School

FRIENDS OF ASHBEACH  
**Valentine's Disco**  
THURSDAY 13<sup>TH</sup> FEBRUARY  
5:30PM - 7PM  
£2.50 ENTRY (INCLUDES BAG OF SWEETS)  
HOTDOGS £1, GLOWSTICKS 50P, POPCORN 50P, CRISPS 50P, DRINK CARTONS 30P, BRACELETS £1 AND VALENTINES GOODIES 50P/£1  
PLEASE BRING MONEY IN A NAMED PURSE  
STRICTLY NO MOBILE PHONES

## ASHBEACH SCHOOL VALUES

### HONESTY

- We have integrity
- We are truthful
- We are true to ourselves
- We ask for help when we need it



### EVOLVE

- We value change
- We grow and learn
- We mature
- We improve



### ASPIRE

- We challenge ourselves
- We aim to be the best we can possibly be
- We want to learn
- We push ourselves to improve



### RESILIENCE

- We have a growth mindset
- We learn from our 'mistakes'
- We keep trying
- We use our tools to help us 'get out of the pit'



### TEAM

- We work together
- We celebrate that we are all different
- We are one family
- We support each other and are kind to one another



## Diary Dates

### 2025

13 Feb	FOA Valentines Disco
14 Feb	EYFS Phonics morning 8.45am – 9.30am, parents invited
14 Feb	FOA Valentines Cake Sale
17 – 21 Feb	Half term holiday
18 Feb	Library Bus visit
24 Feb	Teacher Training Day
25 Feb	Back to school
25 Feb	Parent Consultations
26 Feb	Parent Consultations (yr6 only)
27 Feb	Parent Consultations
03 Mar	Yr 6 English Challenge
06 Mar	World Book Day
07 – 16 Mar	British Science Week
17 – 21 Mar	Common Day for each Class
18 Mar	Dolphin & Koala Library Bus visit
21 Mar	Red Nose Day – red dress up!
22 Mar	Ashbeach Common - Come & Help Day, all families welcome
25 Mar	Family Support - Coffee and Chat, 2.15pm in the Barn
03 Apr	Easter Crafts morning parents invited 9-12pm,
03 Apr	FOA Easter Bonnet competition
07 – 21 Apr	Easter Holidays
15 Apr	Library Bus visit
22 Apr	Start of Summer Term
24 Apr	Tempest – class photos
05 May	Bank holiday – school closed
12 – 15 May	Year 6 SAT's week
15 May	Favourites For Lunch (census)
20 May	Dolphin & Koala Library Bus visit
26 – 31 May	Half term holiday
02 Jun	Teacher Training Day
03 Jun	Back to school
03 Jun	Yr R Vision Screening session
17 Jun	Dolphin & Koala Library Bus visit
28 Jun	Ashbeach Common - Come & Help Day, all families welcome
30 – 01 Jul	YR5/6 Grafham Waters Residential
15 Jul	Dolphin & Koala Library Bus visit
22 Jul	FOA Outside Summer Disco
23 Jul	Last Day of Term
24 Jul	Summer Holidays start
01 Sep	Teacher Training Day
02 Sep	Teacher Training Day
03 Sep	Autumn Term starts
27 – 31 Oct	Half term holiday
03 Nov	Teacher Training Day
04 Nov	Back to school
19 Dec	Last Day of Term

