



# The Ashbeach News

Learning for life – to be the best we can possibly be.

Website: [www.ashbeachprimary.co.uk](http://www.ashbeachprimary.co.uk)  
Email: [office@ashbeach.cambs.sch.uk](mailto:office@ashbeach.cambs.sch.uk)



## Issue No.253

Welcome to the first official newsletter of the year! The autumn weather has settled in and it is nearly time for our winter coats - just remember to put names in first!



The children are settled into their new classes and the teachers are preparing notes for the upcoming parents evening. Please remember to book an appointment by 10<sup>th</sup> October via the Arbor app.

## Reading

Our school improvement priorities are centered around supporting phonics, writing and the children's personal development. However, it could be argued that **READING** is the single most important thing that children learn to do. To become a truly fluent reader, with a good understanding of vocabulary, **YOUR CHILD NEEDS YOUR HELP.**



By listening to your child read their school book each night and then reading them a bedtime story, you will ensure they are successful in learning to read.

I cannot stress what a **HUGE** difference it makes when reading is part of a child's routine at home.

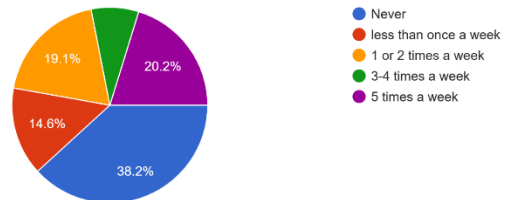


## September/October 2025

I conducted a survey last week, and sadly, when asked:

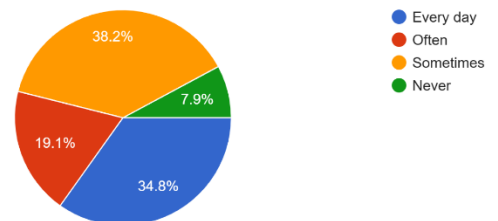
How often does an adult read to you at home, the results were disappointing:

How often does an adult read to you at home?  
89 responses

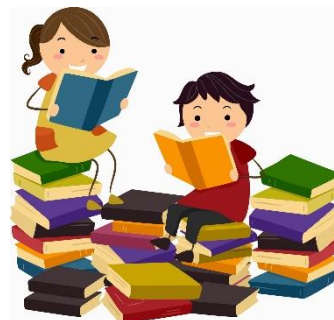


When asked: How often do you read to yourself or an adult at home, the results were a little more heartening:

How often do you read to yourself or an adult at home?  
89 responses



The reality of the school timetable means we have very little time to hear the children read individually or to let them read independently so we really do rely on parents to ensure this happens every day where possible.



## Donations

Recently, we have been lucky enough to receive some donations of money for which we are really grateful. These have enabled us to purchase the following:

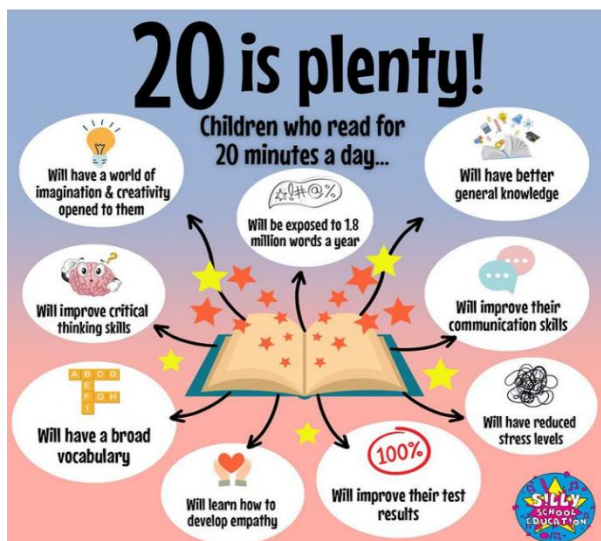


- Transport to swimming
- A collection of poetry books and storage trolley
- A full set of Little Wandle Fluency books
- Resources for forest school
- Outdoor seating for readers

## Little Wandle

Little Wandle is the scheme which we use to teach reading in EYFS, Year 1 and then Little Wandle Fluency in Year 2 and 3.

These books are extremely expensive and we now have lots missing, leading to incomplete sets that cannot be used.



PLEASE, please have a look on bookshelves, under beds, in bedside tables etc for any copies that you may have at home. We would be very pleased to see them!

They have a logo like this in the corner:



## Behaviour

On the whole, behaviour at Ashbeach is very good. However, we have had a number of children playing roughly outside. We encourage the children to be safe, ready and respectful both in the classroom and outside on the playground. Children who use unkind (swear) words or physically hurt another child will lose 20 minutes of their playtime as a consequence. We will try to inform you that this has happened. We will also record this on our internal behaviour record.



Where a child has repeated incidents (3) of this type of behaviour or persistent disruption in class, a meeting will be arranged with the parents or carers. This is as per our existing behaviour policy.

As always, we prioritise rewarding positive behaviour through reward points, praise, positive notes and stickers. Reward points lead to a celebration and certificate in assembly. I always enjoy seeing children showing parents their certificate when you collect them from school.

Thank you for your support with this.



## Healthy snacks

Thank you with your support in sending children in with unwrapped fruit or cheese for break. Not only is this so much better for their health, but we have also seen a reduction in litter on the playground.



## ASHBEACH SCHOOL VALUES

### HONESTY

- We have integrity
- We are truthful
- We are true to ourselves
- We ask for help when we need it



### EVOLVE

- We value change
- We grow and learn
- We mature
- We improve



### ASPIRE

- We challenge ourselves
- We aim to be the best we can possibly be
- We want to learn
- We push ourselves to improve



### RESILIENCE

- We have a growth mindset
- We learn from our 'mistakes'
- We keep trying
- We use our tools to help us 'get out of the pit'



### TEAM

- We work together
- We celebrate that we are all different
- We are one family
- We support each other and are kind to one another



## Diary Dates

### 2025

|             |  |
|-------------|--|
| 04 Oct      | FOA Family Photo Shoots                    |
| 06 Oct      | Tempest Photos                             |
| 06 Oct      | NO swimming                                |
| 06 - 09 Oct | Bikeability for Yr 5&6                     |
| 8-9 Oct     | Life Bus Visits School                     |
| 14 Oct      | Parents Evening                            |
| 16 Oct      | Parents Evening                            |
| 19 Oct      | Harvest Festival Singing @ St Marys Church |
| 21 Oct      | Library bus visit for Koala & Dolphin      |
| 21 Oct      | 2026 EYFS Open Morning                     |
| 23 Oct      | 2026 EYFS Open Morning                     |
| 23 Oct      | Pumpkin competition                        |
| 23 Oct      | Halloween Disco                            |
| 24 Oct      | Pumpkin winners announced in assembly      |
| 27 - 31 Oct | Half term holiday                          |
| 03 Nov      | Teacher Training Day                       |
| 04 Nov      | Back to school                             |
| 14 Nov      | Children In Need - 'Break the Rules' day   |
| 18 Nov      | Library bus visit for Koala & Dolphin      |
| 10 Dec      | KS1 Christmas production 1.45pm            |
| 11 Dec      | KS1 Christmas production 9.30am            |
| 15 Dec      | Christingle Service                        |
| 16 Dec      | Library bus visit fro Koala & Dolphin      |
| 17 Dec      | Christmas jumpers and dinner               |
| 18 Dec      | Christmas Disco                            |
| 19 Dec      | Last Day of Term                           |
| 05 Jan      | Teacher Training Day                       |
| 06 Jan      | Start of Spring Term                       |



## The Ashbeach Primary School

Welcomes you on our **OPEN MORNINGS** for New Reception stage children in 2026

**Tuesday 21<sup>st</sup> October**

**Thursday 23<sup>rd</sup> October**

**9.10 -10.00 am**



If you have a pre-school child please bring him/her along.

To book a place ring our school office on 01733 844262 or

email: [office@ashbeach.cambs.sch.uk](mailto:office@ashbeach.cambs.sch.uk)



Ashbeach School, Ashbeach Drove, Ramsey St Mary's, PE26 2TG

Please visit our website [www.ashbeach.primary.co.uk](http://www.ashbeach.primary.co.uk) for more information

Ashbeach School was rated as 'good' by OFSTED in February 2024



**SUPER STAR SPORT**



## ASHBEACH PRIMARY SCHOOL

Ashbeach Drove, Ramsey St Mary's, Huntingdon PE26 2TG

**MON 27<sup>TH</sup> OCT - FRI 31<sup>ST</sup> OCT**  
**09:00AM TO 15:00PM**

**FULL DAY £25.00**

**HALF DAY £15.00**

**FULL WEEK £115.00**

**EARLY DROP OFF: 8:00AM - 9:00AM : £6**

**LATE PICK UP : 15:00PM - 18:00PM : £15**

**Discount Code : "EARLYBIRD" 10% off! Runs out 10th October!**

**GET IN TOUCH:**  
 Scan the QR code or visit [www.superstarsport.co.uk](http://www.superstarsport.co.uk)

OFSTED OFFICIAL PARTNER

**SCAN HERE**



**Pebble**

### OCTOBER CAMP SCHEDULE

|               | MONDAY                                 | TUESDAY                           | WEDNESDAY                               | THURSDAY                        | FRIDAY                             |
|---------------|--|-----------------------------------|---|---------------------------------|------------------------------------|
| 9:00 - 9:30   | Registration and Morning talk          | Registration and Morning talk     | Registration and Morning talk           | Registration and Morning talk   | Registration and Morning talk      |
| 9:30 - 10:30  | Activity 1: Frankenstein Football      | Activity 1: Haunted Racket Tennis | Activity 1: Target Terrors              | Activity 1: Dracula Dodgeball   | Activity 1: Enchanting Gymnastics  |
| 10:30 - 10:45 | Break Time                             | Break Time                        | Break Time                              | Break Time                      | Break Time                         |
| 10:45 - 11:45 | Activity 2: Pumpkin Dodgeball          | Activity 2: Handball Wizards      | Activity 2: Broomstick Bancho-ball      | Activity 2: Skeleton Relay      | Activity 2: Ghostly Volleyball     |
| 11:45 - 12:15 | Stem Activity: Spooky Lego             | Stem Activity: Paper Bats Races   | Stem Activity: Skeleton Bridge Building | Stem Activity: Monster Building | Stem Activity: Ghost Busters       |
| 12:15 - 13:15 | Lunch Time                             | Lunch Time                        | Lunch Time                              | Lunch Time                      | Lunch Time                         |
| 13:15 - 14:00 | Activity 3: Monster Mash Dance Battle! | Activity 3: Spooky Talent Show    | Activity 3: Werewolf Hunts!             | Activity 3: Tennis Tricksters   | Activity 3: Freaky Friday Football |
| 14:00 - 14:45 | Activity 4: Multi-Sport Mashup         | Activity 4: Multi-Sport Mashup    | Activity 4: Multi-Sport Mashup          | Activity 4: Multi-Sport Mashup  | Activity 4: Multi-Sport Mashup     |
| 14:45 - 15:00 | Certificates and Home Time             | Certificates and Home Time        | Certificates and Home Time              | Certificates and Home Time      | Certificates and Home Time         |

## Autumn Family Photoshoot

### Saturday 4th October

£15 per 10 minute slot with a professional photographer, Dan Waters.

£5 per digital image (available to view in a private gallery)

Please book your place in the school office. Limited spaces. First-come, first-served.

Photoshoot will take place on the school common, unless terrible weather forces us inside!

**Friends of Ashbeach School**

**Dan Waters Creative**



# RAMSEY REPAIR CAFE

**SATURDAY 25TH OCTOBER, 1.30PM - 4PM**  
**AT RAMSEY LIBRARY**

Our experienced volunteer repairers can help with: Sewing/mending clothes, general repairs (fixing remote controls, disk drives, petrol lawnmowers etc) mending clocks/ watches and mending ceramics. Refreshments available.



Limited appointments, so booking is essential. Booking forms are available at the Ramsey Library or please contact [repaircaferamsey@gmail.com](mailto:repaircaferamsey@gmail.com) Repairs are free but donations are welcome!



**MAYOR OF RAMSEY INVITES YOU TO**

## FAMILY BARN DANCE

DANCING TO FEN BLOW-ENGLISH COUNTRY DANCE BAND

All profit goes to: parents of Ramsey Spinning & Junior School, and Friends of Ashbeach School

**SATURDAY 11 OCTOBER 6:30PM**  
**THE CAMP, WOOD LANE PE26 2XB**

INCLUDES HOG ROAST  
**FAMILY TICKET (4 PEOPLE) £40**  
**ADULT £15.00 CHILD £8.00**

**CLICK HERE TO BOOK YOUR TICKETS**





Wildlife Trust for  
**Beds, Cambs  
& Northants**  
The Great Fen

## APPLE & HARVEST FAIR COMMUNITY CONTESTS

### Contest One: WONKY VEG

Are you a home-growing hero? But growing the wonkiest veg in the Fens? Prove it, and save your curliest carrot or squiffiest squash for our Wonky Veg contest!

### Contest Two: FENTASTIC SCARECROWS

What does the 'Spirit of the Fens' mean to you? Can you create an amazing Scarecrow that represents that? We'd love to see it!

More info and T&Cs:

[greatfen.org.uk/competitions](http://greatfen.org.uk/competitions)

Date: Sunday 12th October, 11am - 4pm

Location: Ramsey Rural Museum and Walled Garden

A Peatland Progress event in collaboration with:



## Your Education Inclusion Family Advisor



Danielle Tetherton

Education Inclusion Family Advisors offer you an opportunity to ask for information, advice and support on any issue affecting your family life in a relaxed and confidential environment. These areas include:

- Challenging behaviour
- Routines
- Supporting emotions and wellbeing
- School transitions
- Parenting strategies
- Building resilience and confidence
- Any other family challenges you might be facing

As Education Inclusion Family Advisors, we offer support in various ways:

- Up to six 1:1 sessions with parents/carers (virtually or face to face in your child's school on request)
- Workshops on specific topics (currently held virtually)
- Signposting to other services such as parenting courses and support services

For more information, please speak to your school's office, contact me directly on:

✉ [danielle.tetherton@cambridgeshire.gov.uk](mailto:danielle.tetherton@cambridgeshire.gov.uk) or  
by using this link or QR code to request support:  
<https://forms.office.com/e/XfGi0v6VE9>



cambridgeshire.gov.uk

1

### SUPPORT THE SCHOOL

The PTA is vital to the success of the school. Funds raised enrich your child's learning and make every student's experience better. Be part of the group that pays for the playground your child loves or funds the library that's their favourite place to be.

2

### IT'S TOTALLY FLEXIBLE

Whether you're a full-time parent or working the nine to five, anyone can get involved. It's less commitment than you think and you don't always have to attend meetings. Small jobs such as designing a poster, distributing letters or running a stall keep everything running smoothly.

3

### MAKE LASTING FRIENDSHIPS

Meet and chat to a wider circle of families from different classes and year groups. Get to know other parents, and bond over exciting events, socials and get-togethers. Find a place to belong and spend time with others who share your values.

4

### BE BETTER CONNECTED

Create closer links with the head, teachers and staff. If you're new to the school, the PTA is an excellent way to find out how things work and become part of the community. If not, you'll still gain greater insight by seeing how things work from both sides.

**PTA**  
The home of school fundraising

# 10 REASONS TO JOIN THE PTA

5

### BECAUSE IT'S FUN!

Be part of the team which organises the best events and get-togethers. Debrief over a glass of wine (or two). Suggest your most hare-brained ideas and watch as it catches on and everyone wants a piece of the action. Laugh. Cry. Be there for each other.

6

### CHANGE SCHOOL FOR THE BETTER

Have your say on important decisions. Work with the school and other parents to see where improvements can be made, and implement them. Directly influence the experience of your child and hundreds of others.

7

### LEARN NEW SKILLS

Everyone has something they can bring to the PTA, but you can also learn new skills by trading with others. Always wanted to perfect that cookie recipe? Not sure how to design a poster? Want to hone your public speaking skills? You can do it with the support of the committee.

8

### IMPROVE YOUR CHILD'S LEARNING

Studies show that children whose parents are involved in their education do better in school. Engaging with the PTA shows your children's education is important to you. Play your part in improving the school and watch them

9

### IT'S NOT JUST FOR MUMS

Everyone is welcome, and it's especially important to have dads and male carers represented, as male role models are crucial in children's upbringing. Dads can bring different skills; they can bring a different perspective, and they can bring along other dads.

10

### CREATE LASTING MEMORIES

Our children are only at school for a few years, but they will remember the difference we make for a lifetime. They will cherish the activities and games we fund, learn using resources we buy, and remember the events we hold. Help keep the PTA going so future pupils can benefit too.

## THE LIBRARY PRESENTS

## Summer Reading Challenge Celebration

kindly supported by Ramsey Town council

Cambridgeshire  
**libraries**

### Snow White, Rose Red, Bear Brown

Snow White and Rose Red have their quiet forest life interrupted by a friendly bear, and a new chapter begins. Why has the bear chosen them as playfellows? Why is there sadness in his eyes? and who is that rude little man with a ridiculously long beard that they keep bumping in to? All questions will be untangled in this new show from the Woods of Widdershins, using puppets, storytelling, original music and a fantastical fairytale forest.



Ramsey Library

Saturday 1st November 2.30pm

£2 per person. Suitable for ages 4+

Book Tickets at Ramsey Library or email  
[stives.referral@cambridgeshire.gov.uk](mailto:stives.referral@cambridgeshire.gov.uk)